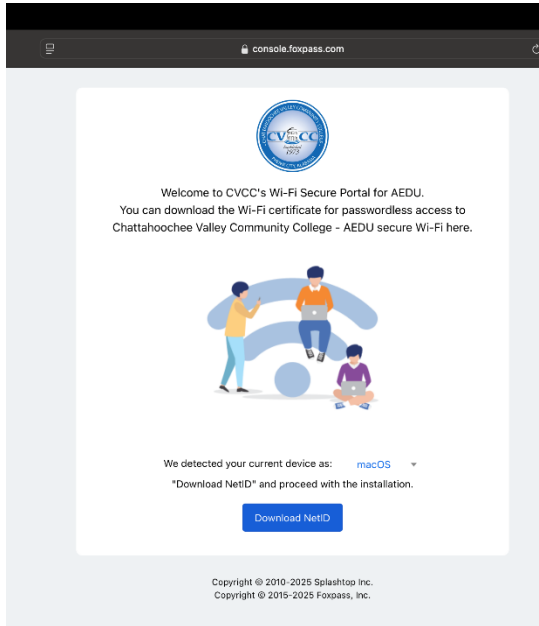
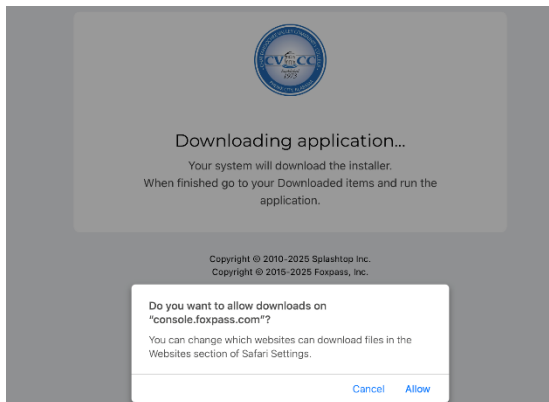


# Setup MacOS Device to connect to CVCC AEDU Wi-Fi For Employees and Currently Enrolled Students

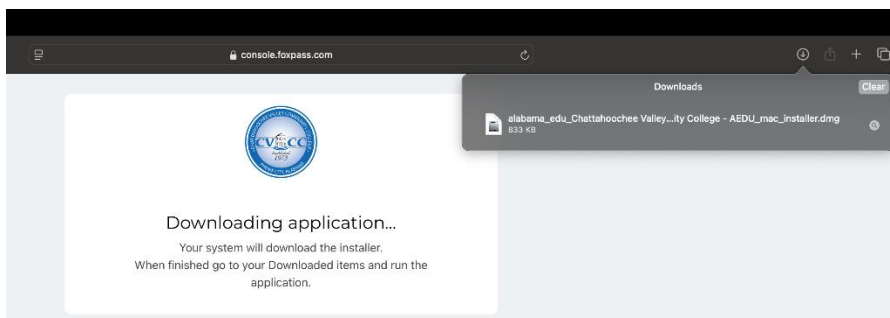
- Go to <https://www.cv.edu/foxpass> from anywhere you have internet access using Safari.
- Verify it shows device as “iOS” and click on “Download NetID”.



- Click “Allow” to allow the download

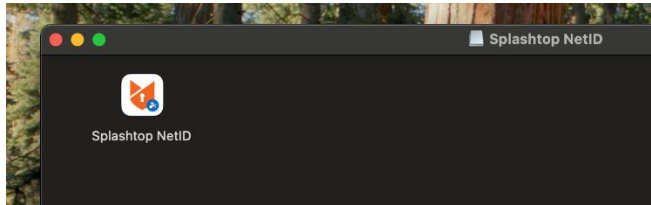


- Once downloaded, click on the .dmg file that is in your download folder

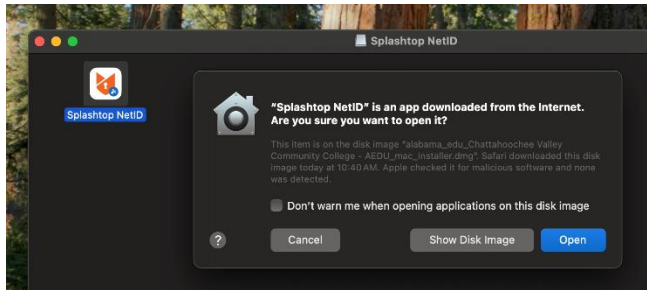


# Setup MacOS Device to connect to CVCC AEDU Wi-Fi For Employees and Currently Enrolled Students

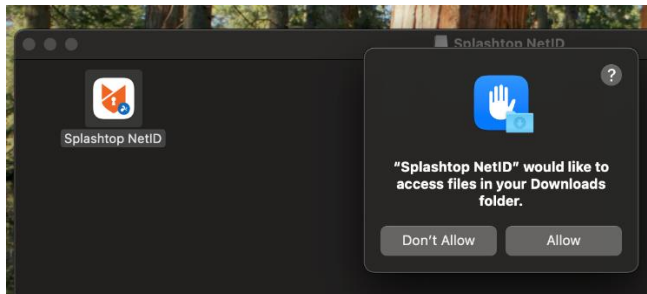
- Click the Splashtop NetID icon that appears



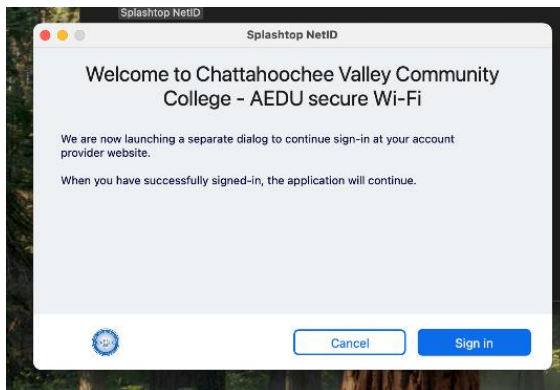
- Approve the pop-up asking if you are sure you want to open the “Splashtop NetID” by clicking “Open”



- Click “Allow” to let “Splashtop NetID” access to your downloads folder



- Click “Sign in” to access the CVCC – AEDU secure Wi-Fi

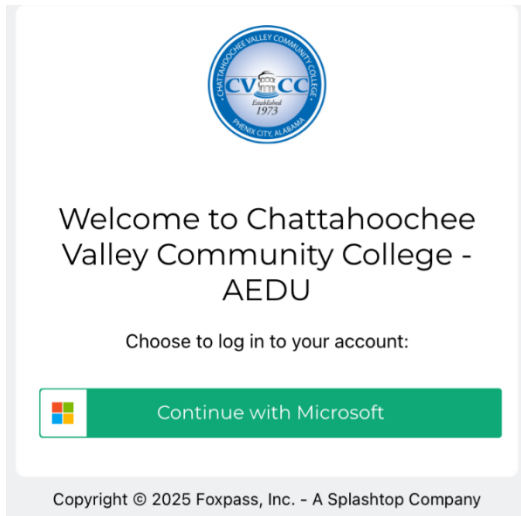


'll c

# **Setup MacOS Device to connect to CVCC AEDU Wi-Fi**

## **For Employees and Currently Enrolled Students**

- Click “Continue with Microsoft”



- Complete the authentication by entering your A#@alabama.edu and the password you created when you claimed your account.



### **Sign in**

A012345678@alabama.edu

[Can't access your account?](#)

Back

Next

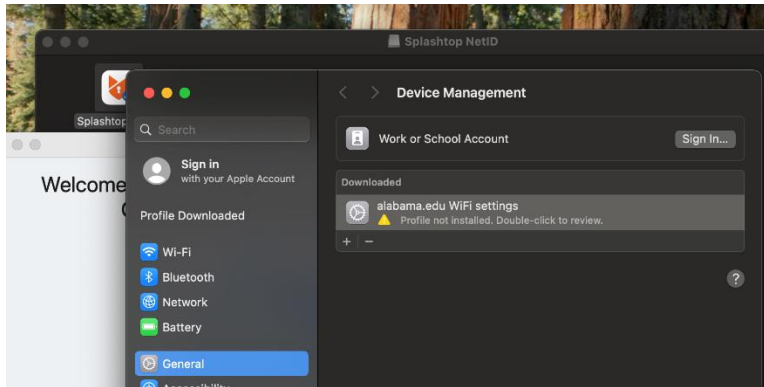
- Do not use the “Can’t access your account” on the “Sign in” page or the “Forgot Your Password” link on the “Enter password” page if you forgot your password. To reset your password, go to <https://password.alabama.edu> and follow these steps:
  1. Enter your [A#@alabama.edu](#) and click “Go”
  2. Click the “Forgot Password” link and this will email a code to your personal email address
  3. Enter the code into the page
  4. Reset your password meeting the requirements

Note: If you have issues, you can call 334.214.4860 during normal College Business Hours

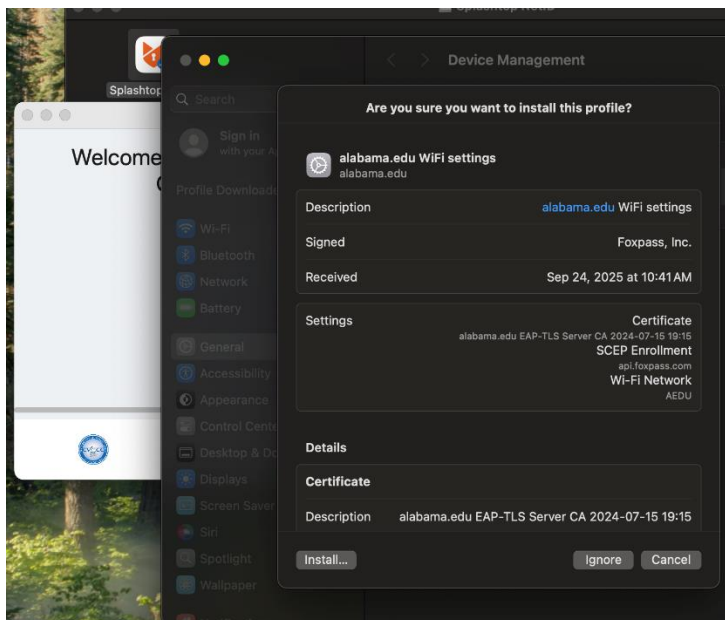
# Setup MacOS Device to connect to CVCC AEDU Wi-Fi

## For Employees and Currently Enrolled Students

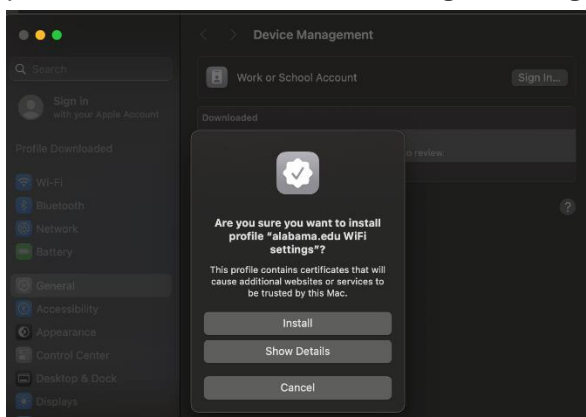
- Once logged in, access your “Settings → General → Device Management” and click on the “alabama.edu WiFi settings” profile to install



- Click “Install” on the “Are you sure you want to install this profile” after verifying it is for alabama.edu and signed by Foxpass, Inc.



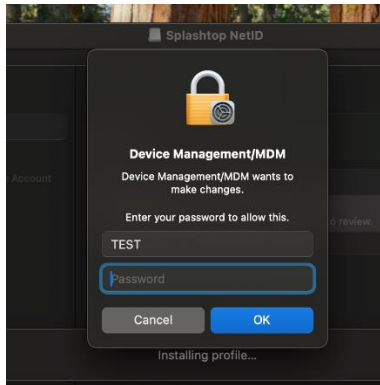
- Verify that you want to install by clicking “Install” on the “Are you sure you want to install profile ‘alabama.edu WiFi settings’” dialog box



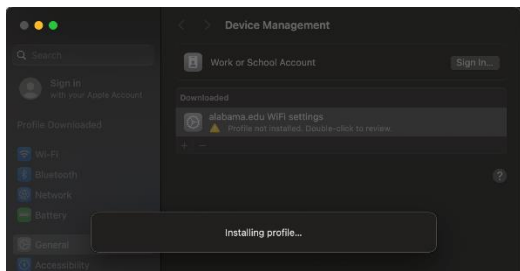
# Setup MacOS Device to connect to CVCC AEDU Wi-Fi

## For Employees and Currently Enrolled Students

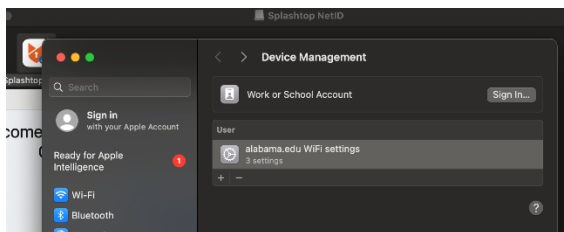
- Enter your computer login (not Alabama.edu) when asked for a Device Management password



- You will get a notification saying “Installing profile...”



- Verify that the profile was installed successfully



- Once installed, you should see AEDU listed under your “Known Networks” and can connect to it when on campus

